

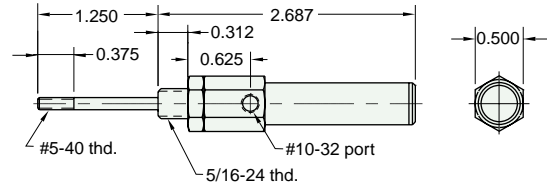


3/8" BORE BRASS MINIMATIC® CYLINDER

3SS-AR-1/2

Mount: Stud **Available Stroke Lengths:** 1/2"
Type: Single Acting
 Spring Extended

Add **-N** to the end of the part number for a non-threaded rod



Rod nut included, but not shown on drawing

3PS-1/2

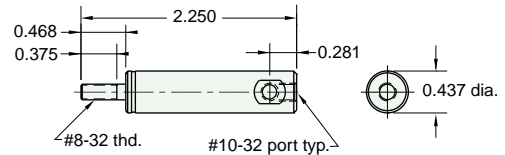
Mount: Body* **Available Stroke Lengths:** 1/2"
Type: Single Acting
 Spring Return **Ports:** End or Side

Brass Rod - non-rotating

Add **-N** to the end of the part number for a non-threaded rod

*Super Structure recommended

First Cylinder - 1949



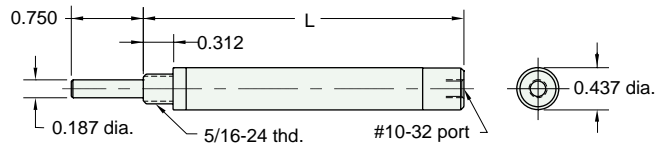
Rod nut included, but not shown on drawing

3SS-□

Mount: Stud **Stroke** | 1/2" | 1" | 2" | 3"
Type: Single Acting
 Spring Return **Length "L"** | 2.093 | 3.343 | 5.218 | 7.093

To order: Add stroke length to the end of the part number

Add **-T** to the end of the part number after stroke for a #10-32 x 1/2" rod thread



3CS-□

Mount: Clevis **Stroke** | 1/2" | 1" | 2" | 3"
Type: Single Acting
 Spring Return **Length "L"** | 2.468 | 3.406 | 5.281 | 7.156

To order: Add stroke length to the end of the part number

Add **-T** to the end of the part number after stroke for a #10-32 x 1/2" rod thread

